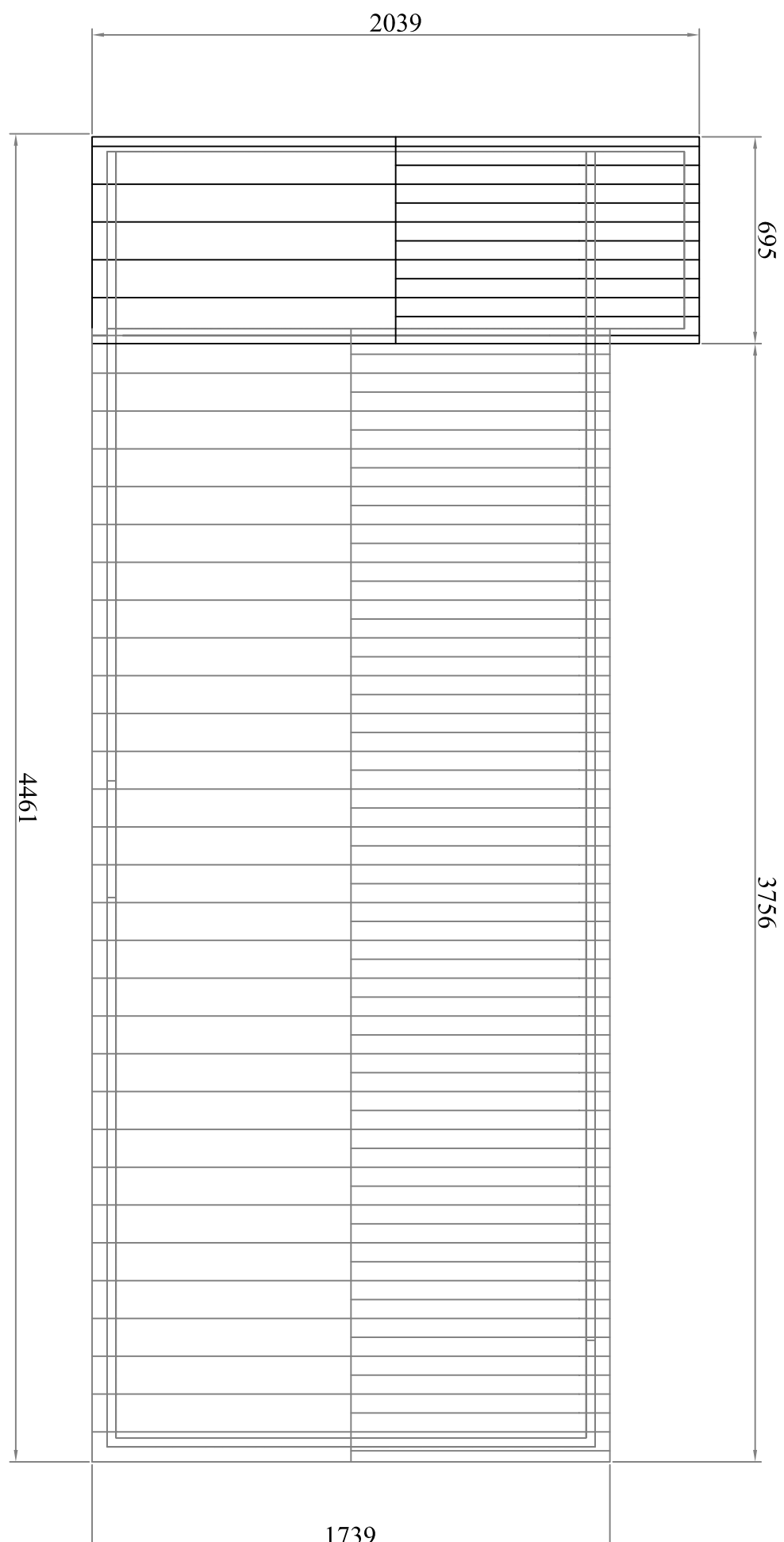
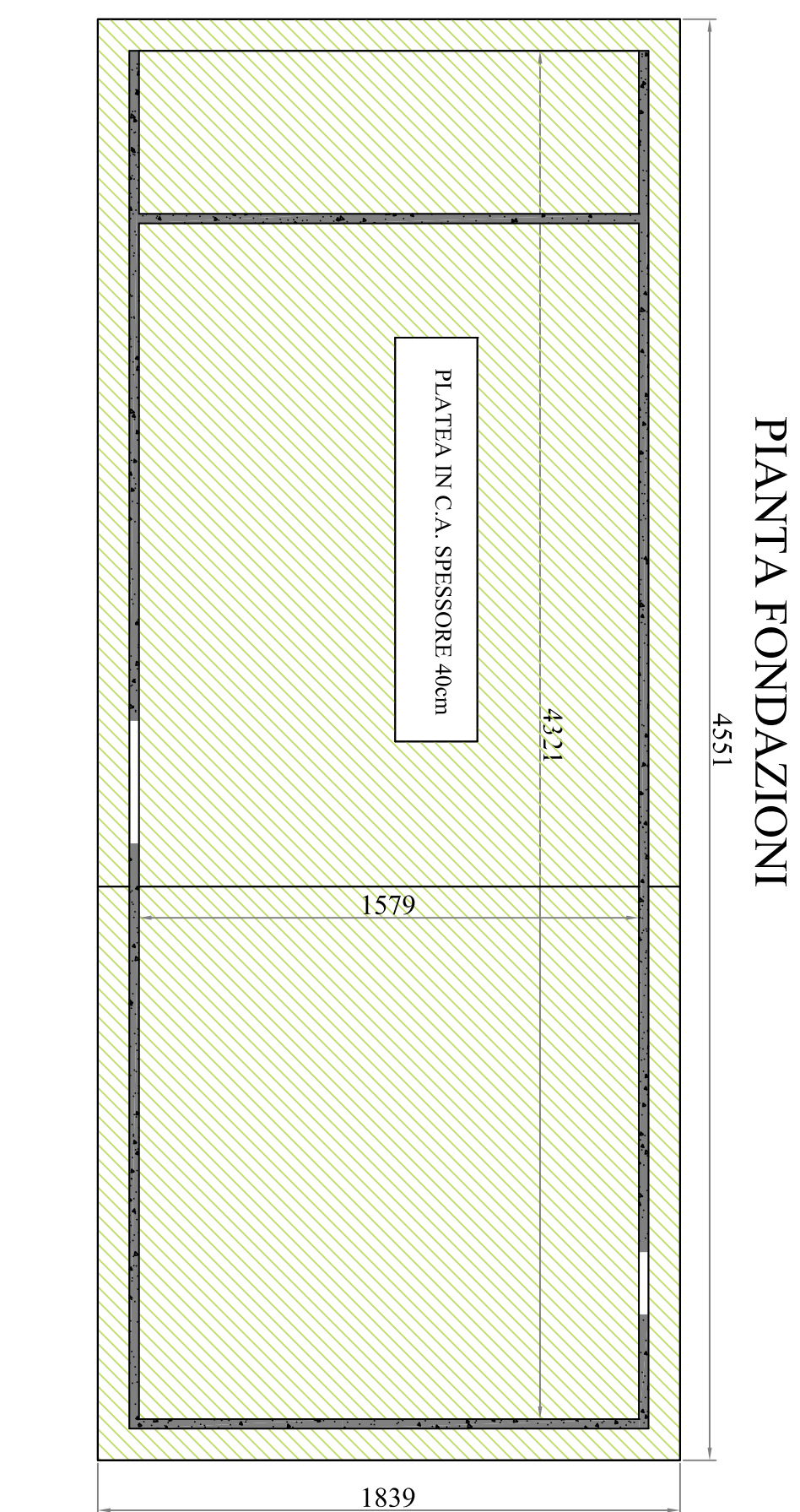
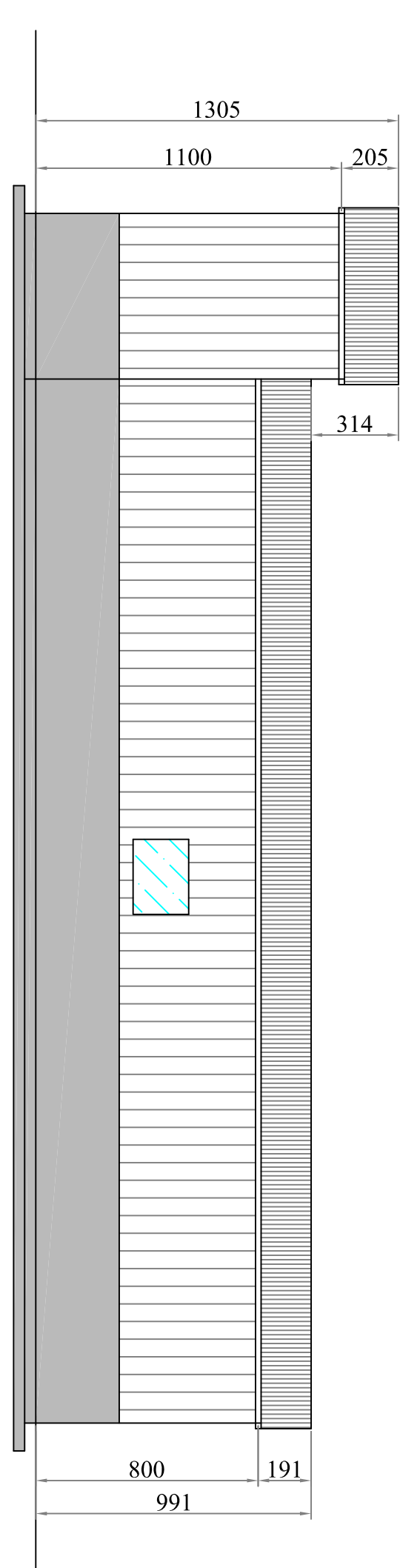
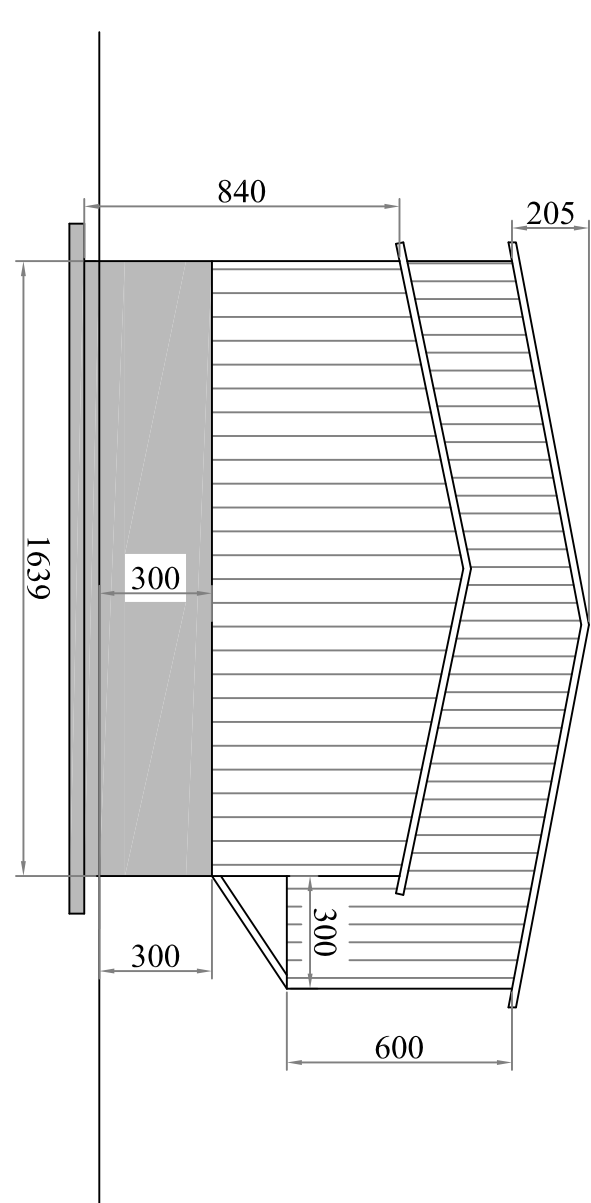


PIANTE SCALA 1:200

PIANTA COPERTURA



PROSPETTI SCALA 1:200

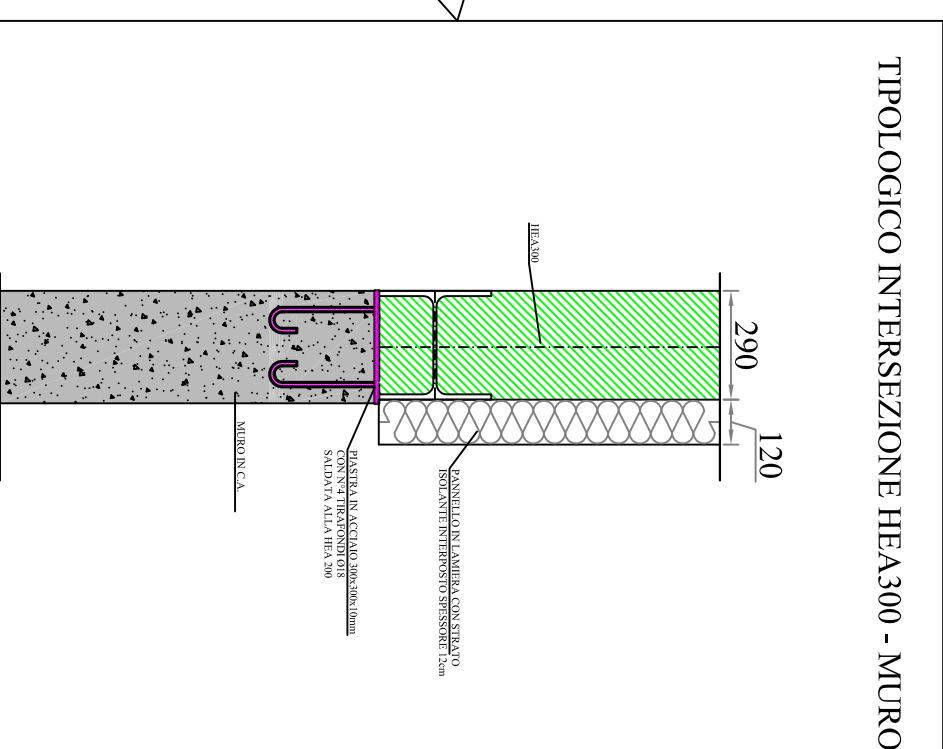
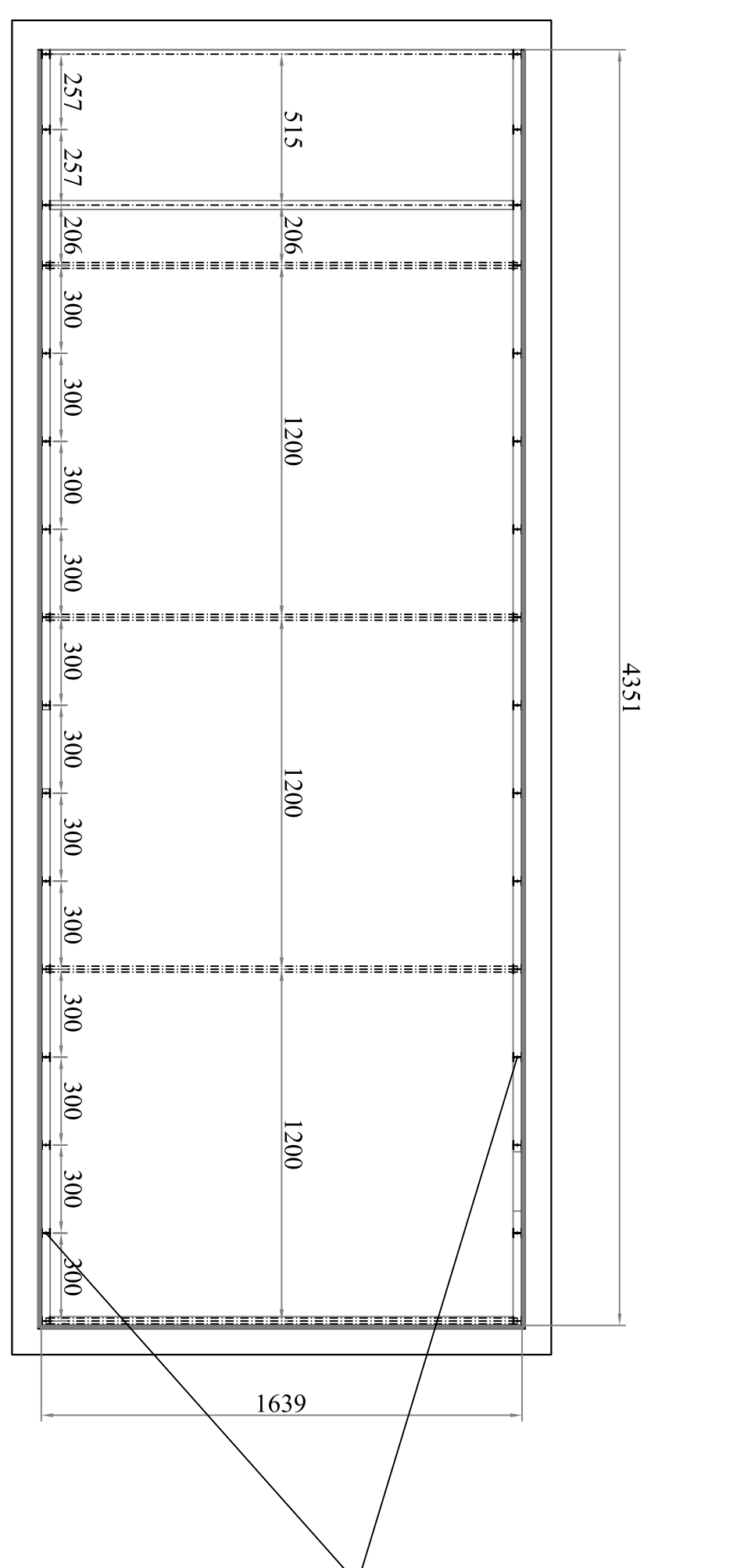
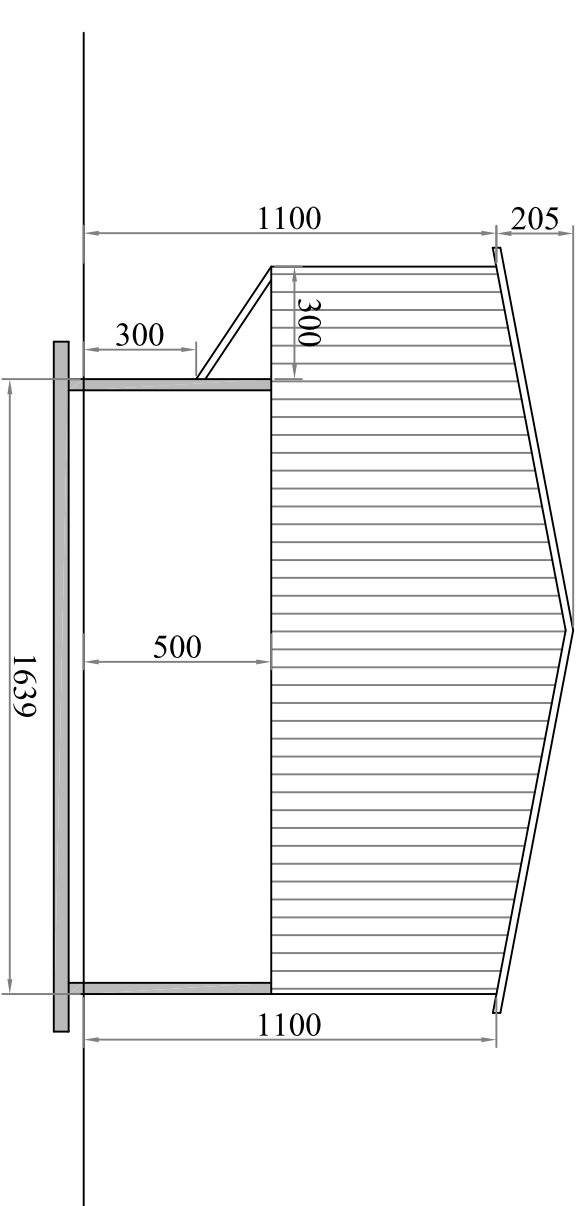
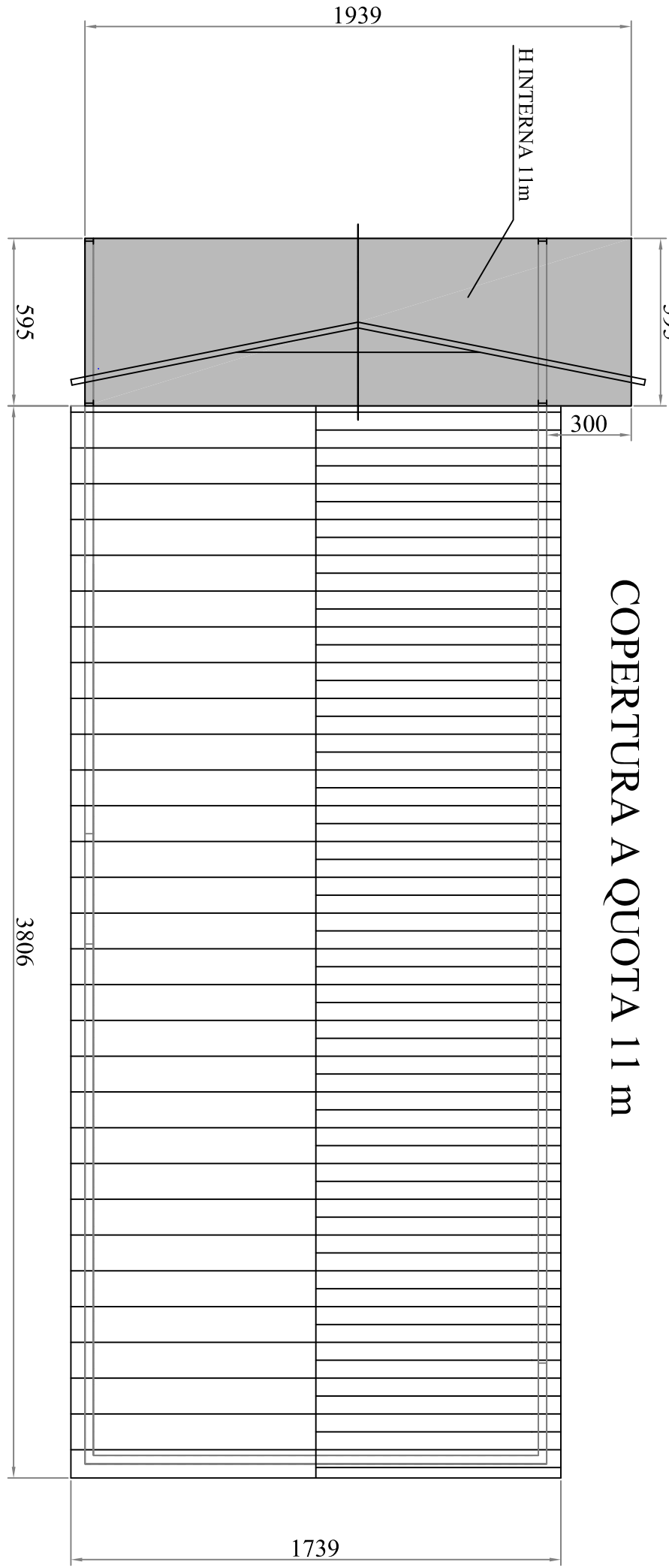
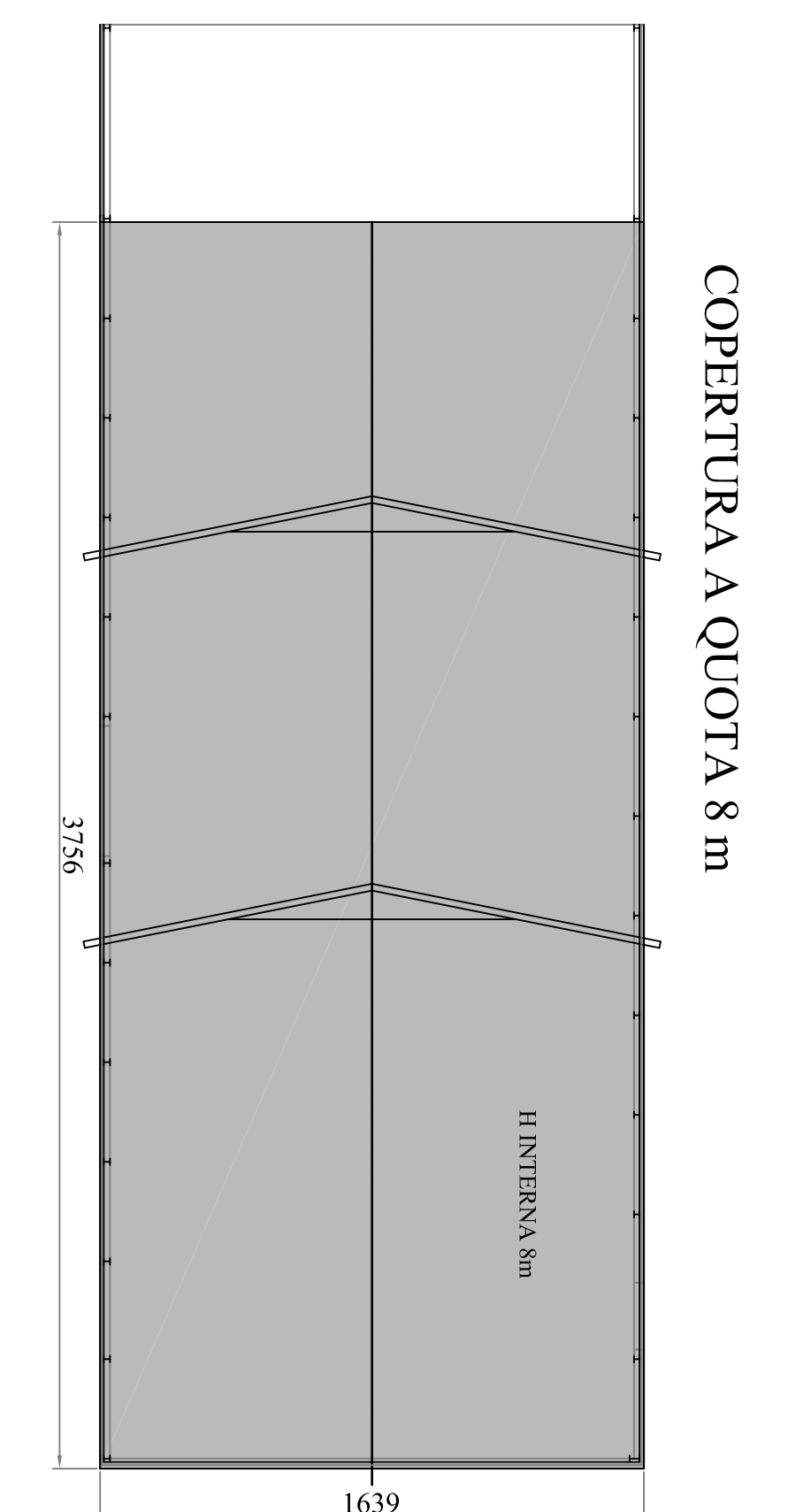


*STRUTTURA MISTA IN CALCESTRUZZO ARMATO E ACCIAIO DELL'ALTEZZA MASSIMA DI CIRCA 11 M.

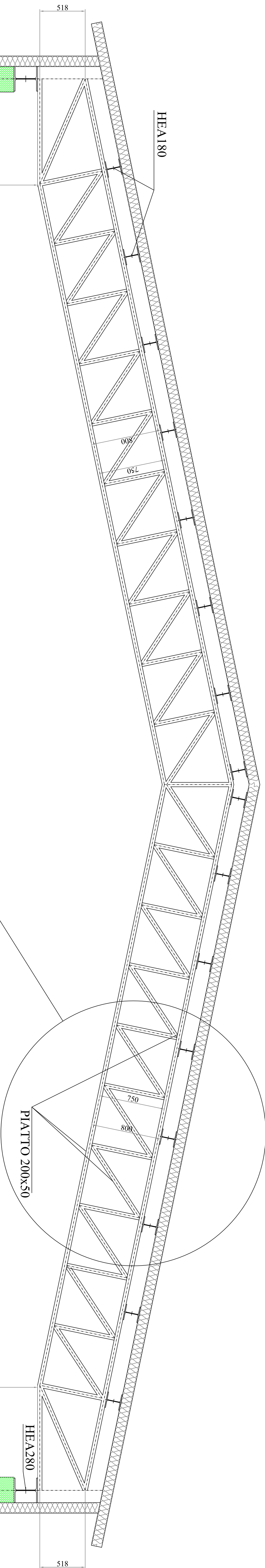
IL LEDIFICIO È COSTITUITO DA UNA STRUTTURA DI BASE IN CALCESTRUZZO ARMATO (FONDAZIONE E MURI IN ELEVAZIONE) DELL'ALTEZZA DI 3 METRI DAL PIANO CAMPAGNA E DA UNA SOPRA-STRUTTURA IN ELEVAZIONE REALIZZATA CON COLONNE PORTANTI E COPERTURA IN ACCIAIO COMPOSTA DA MONTANTE E TRAVERSI IN ACCIAIO.

* LE PARTI IN ACCIAIO SARANNO CHIUSE CON DEI PANNELLI COIBENTATI IN LAMIERA SIA PER LE PARETI VERTICALI CHE PER LA COPERTURA.

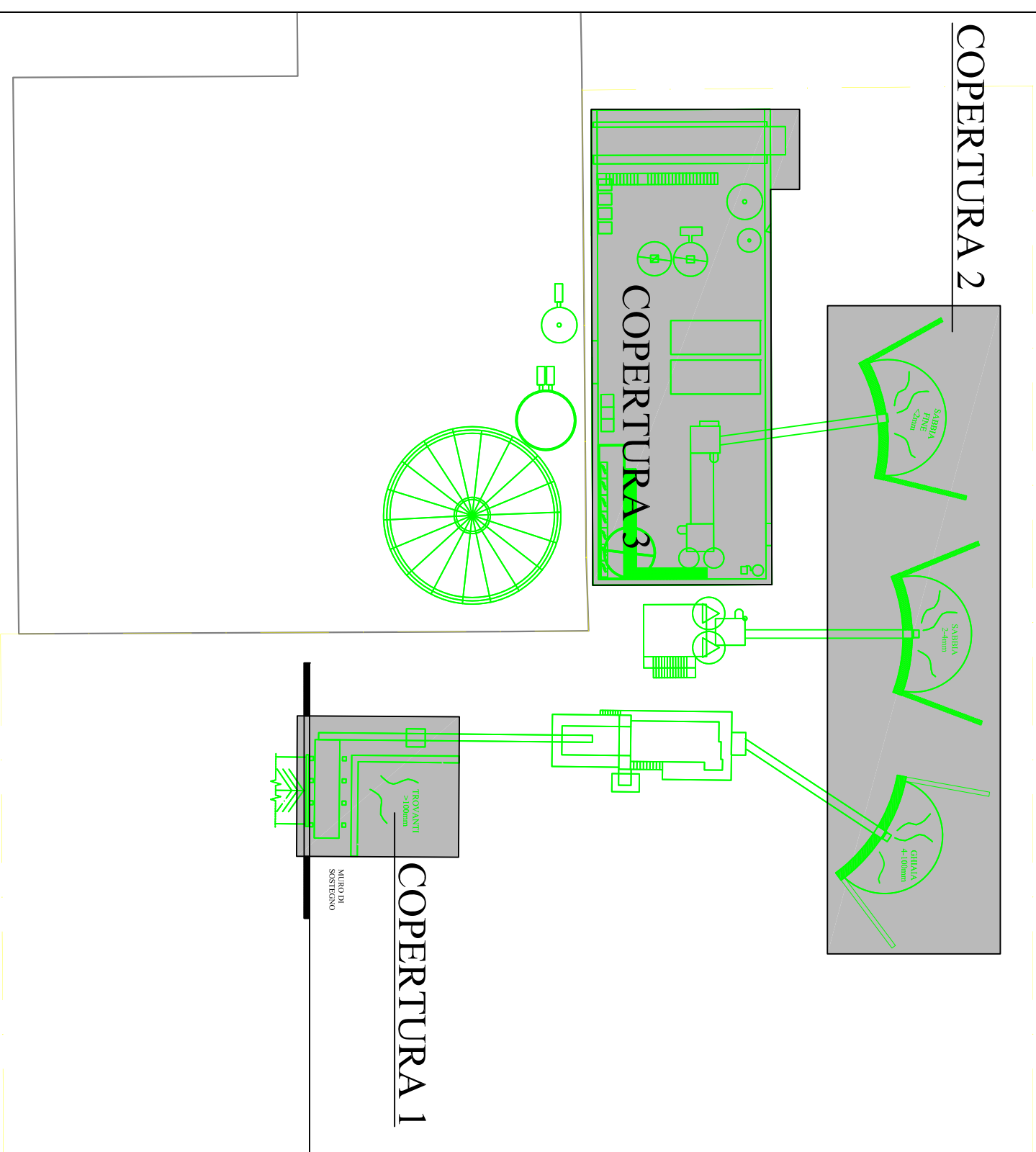
* COPERTURA CON PENDENZA min = 20% REALIZZATA CON STRUTTURA IN CARPENTERIA VINCOLATA SU COLONNE IN ACCIAIO.



PARTICOLARE COPERTURA EDIFICIO 1:50



PLANIMETRIA SCALA 1:500

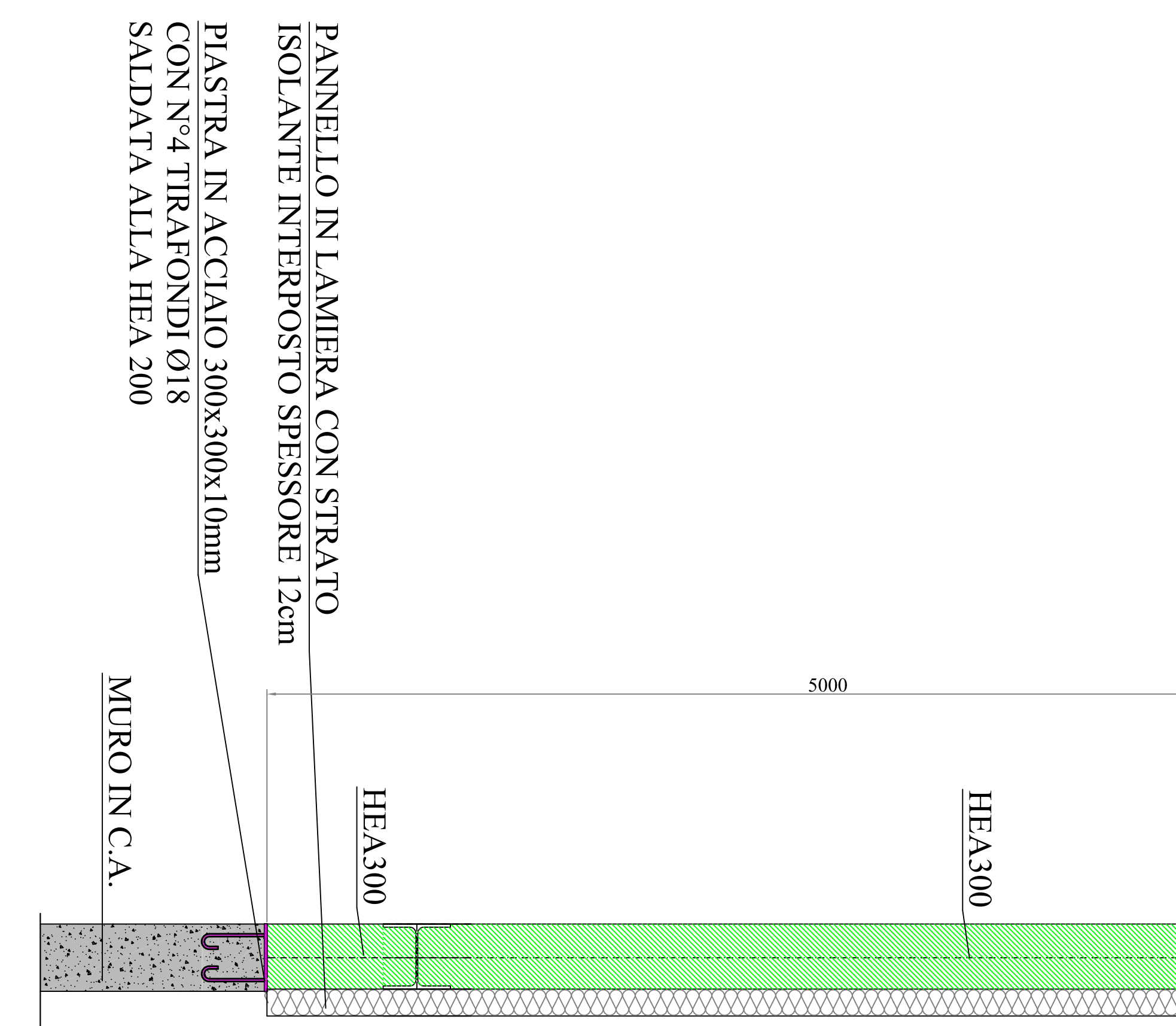
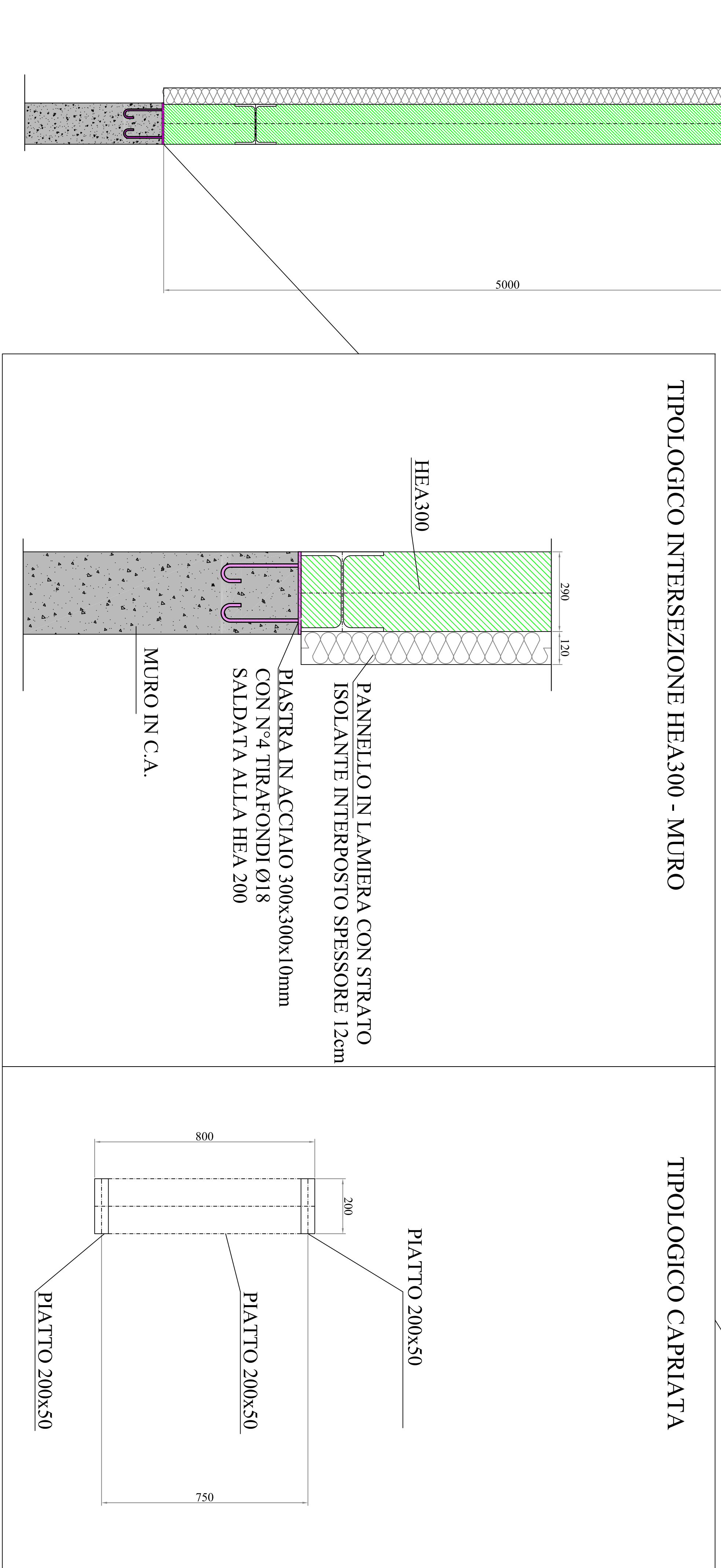
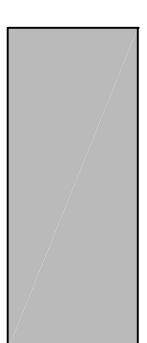


LEGENDA

LIMITE AREA DI INTERVENTO

VASCA IN c.a. INTERRATA A CIELO
APERTO PRESENTE IN AREA DI
INTERVENTO

ARÉE COPERTE

[illegible]